

# Jumbo Roll Tissue Dispensers

Alwin Jumbo Roll Tissue dispensers are ideal for all high traffic restroom settings. Smooth, easy tissue delivery assures reliable dispensing. Designed for maximum strength and durability with impact resistant materials.

Model 24  
Single 9" Jumbo Roll Tissue with Stub Roll



Model 26  
Single 9" Jumbo Roll Tissue Dispenser



Model 27  
Twin 9" Jumbo Roll Tissue Dispenser

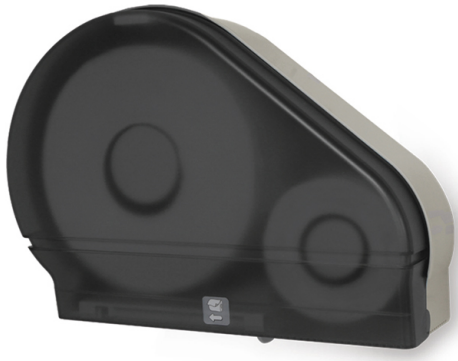


Model 29  
Single 12" Jumbo Roll Tissue



We know dispensers -  
**you should know us.**

# Jumbo Roll Tissue Dispensers



**Model 24**  
Single 9" Jumbo Roll Tissue with Stub Roll

Accommodates all brands of 9" Jumbo Roll Tissue with 2.5" to 3" cores  
Comes with molded mandrels and removable adaptors to accommodate core sizes up to 3.375"  
Sliding panel ensures the use of only one roll at a time  
Width 16.25"  
Height 11.50"  
Depth 5.25"



**Model 26**  
Single 9" Jumbo Roll Tissue Dispenser

Accommodates all brands of 9" Jumbo Roll Tissue with 3" cores  
Removable adaptor models available by special order for 2.25" to 3" cores  
Width 11.38"  
Height 11.38"  
Depth 5.38"



**Model 27**  
Twin 9" Jumbo Roll Tissue Dispenser

Accommodates all brands of 9" Jumbo Roll Tissue with 3" cores  
Removable adaptor models available by special order for 2.25" to 3" cores  
Width 20.25"  
Height 11.75"  
Depth 5.38"





**Model 29**  
Single 12" Jumbo Roll Tissue


Accommodates all Jumbo Roll Tissue widths  
The modular mandrel enables conversion to either one 12" roll or a 9" with stub roll with 3" cores  
Width 16.63"  
Height 14.44"  
Depth 5.00"

## All Alwin JRT dispensers come standard with, or have the following options:

Custom branding (with your logo)  
Permanent key knob option  
Available in the standard color/finish combinations below

 Translucent Navy Cover  
Black Body

 Translucent Navy Cover  
Beige Body

 Translucent White Cover  
Beige Body

[www.alwin.com](http://www.alwin.com)